

MARKET HISTORY

Includes data through 11/2009

New Castle County, DE Single-Family



Market History Report

The Market History Report details current and historical statistical information for single-family listings recorded within TREND. This statistical report is organized by county and contains valuable month-over-month, year-over-year statistical information for each of the last 10 years. The Market History Report details activity in a particular market over a 10-year period – from where it's been to where it's at now. The easy-to-read month-over-month, year-over-year chart and graph enables you to clearly identify the year-over-year changes while accounting for seasonal and market trends.

Utilizing the report allows you to gain a better understanding of your market. This will give you new insights and increase your company's value when working with consumers. This powerful report is provided exclusively to TREND members.

Contents

Total Inventory	3
Inventory Accumulation	4
Pending Units	5
Settled Units	6
Total Settled Volume	7
Median Settled Price.....	8
Average Settled Price	9
Average Settled Price / Original Price.....	10

Definitions

Total Inventory The number of active single-family listings on the market on the last day of the specified month.

Inventory Accumulation The number of months it would take to exhaust the current supply of single-family listings at the current absorption rate.

Absorption Rate The average number of single-family listings sold in the market per month over the previous 12 months.

Pending Units The number of single-family listings with Pending dates during the specified month.

Settled Units The number of single-family listings with Settled dates during the specified month.

Total Settled Volume The total dollar volume of single-family listings that have settled during the specified month.

Median Settled Price The median price that single-family listings settled for during the specified month. Determined by arranging all Settled Listings in numerical order by price and then selecting the middle value.

Average Settled Price The average price that single-family listings settled for during the specified month. Determined by dividing the Total Settled Volume by the number of Settled Listings.

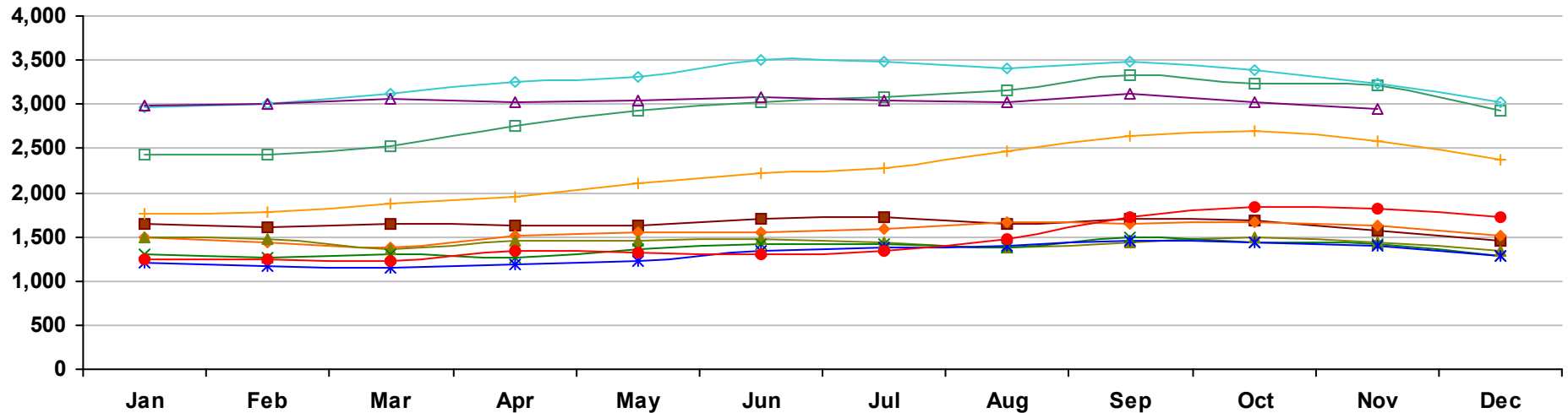
Average Settled Price / Original Price The average percentage of the Original Price that single-family listings settled for during the specified month. This number is determined by dividing the Settled Price by the Original Price for every listing, summing them and then dividing by the number of settled listings. TREND excludes listings if the Settled Price is greater than 150 percent or less than 50 percent of the Original Price. This ensures the percentage is more representative of listings in the market area.

Percent Change The change in value as compared to the same month of the previous year. Indicated by +/-0.0%.

Notes on Statistics

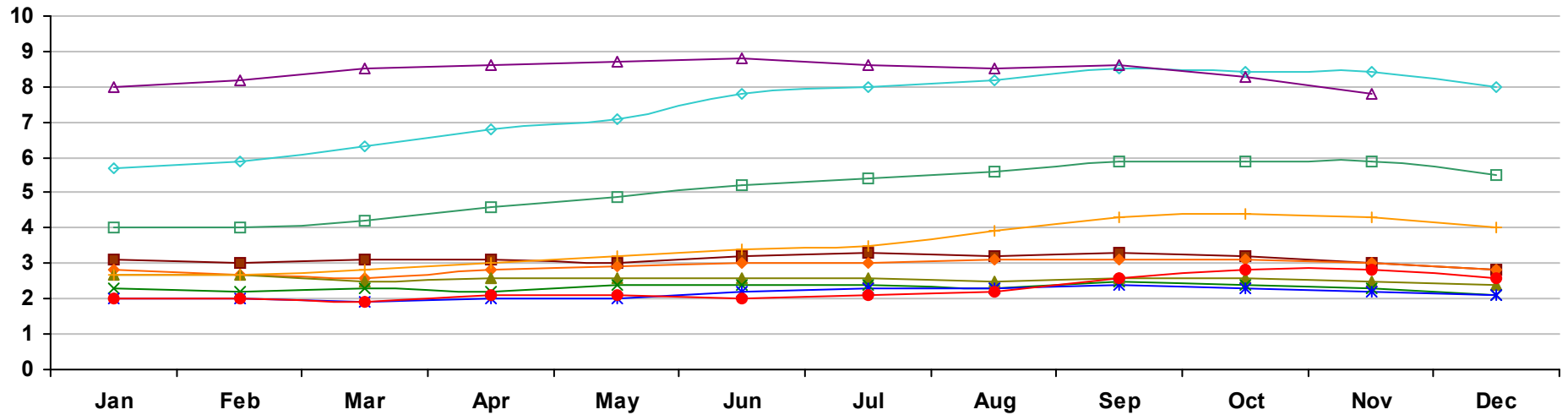
- All statistics are from TREND's monthly Residential Activity Reports. Due to the fluid nature of MLS data, insignificant statistical variations may occur with regard to sales activity between the various TREND reports.
- Mobile homes and condominiums are excluded from these statistics.
- This report includes information on listings and transactions facilitated through TREND and does not reflect the total number of listings and transactions of a given market area.
- All monetary statistics are rounded to the nearest \$10.

New Castle County, DE - Single-Family - Total Inventory



	Jan	Feb	Mar	Apr	May	Jun	Jul	Aug	Sep	Oct	Nov	Dec
2000	1,653	1,608	1,655	1,622	1,622	1,706	1,713	1,654	1,703	1,691	1,565	1,462
2001	1,495 -9.6%	1,440 -10.4%	1,375 -16.9%	1,514 -6.7%	1,550 -4.4%	1,559 -8.6%	1,595 -6.9%	1,674 1.2%	1,646 -3.3%	1,668 -1.4%	1,618 3.4%	1,508 3.1%
2002	1,485 -0.7%	1,466 1.8%	1,359 -1.2%	1,451 -4.2%	1,445 -6.8%	1,469 -5.8%	1,434 -10.1%	1,369 -18.2%	1,443 -12.3%	1,496 -10.3%	1,430 -11.6%	1,346 -10.7%
2003	1,310 -11.8%	1,262 -13.9%	1,292 -4.9%	1,263 -13.0%	1,365 -5.5%	1,412 -3.9%	1,413 -1.5%	1,371 0.1%	1,501 4.0%	1,436 -4.0%	1,413 -1.2%	1,282 -4.8%
2004	1,206 -7.9%	1,172 -7.1%	1,156 -10.5%	1,183 -6.3%	1,222 -10.5%	1,332 -5.7%	1,375 -2.7%	1,406 2.6%	1,445 -3.7%	1,431 -0.3%	1,391 -1.6%	1,289 0.5%
2005	1,251 3.7%	1,251 6.7%	1,231 6.5%	1,348 13.9%	1,320 8.0%	1,300 -2.4%	1,339 -2.6%	1,469 4.5%	1,721 19.1%	1,841 28.7%	1,821 30.9%	1,714 33.0%
2006	1,770 41.5%	1,778 42.1%	1,870 51.9%	1,960 45.4%	2,096 58.8%	2,226 71.2%	2,283 70.5%	2,462 67.6%	2,636 53.2%	2,689 46.1%	2,589 42.2%	2,380 38.9%
2007	2,433 37.5%	2,434 36.9%	2,521 34.8%	2,764 41.0%	2,923 39.5%	3,030 36.1%	3,073 34.6%	3,161 28.4%	3,324 26.1%	3,244 20.6%	3,219 24.3%	2,925 22.9%
2008	2,965 21.9%	3,004 23.4%	3,119 23.7%	3,261 18.0%	3,320 13.6%	3,511 15.9%	3,483 13.3%	3,405 7.7%	3,492 5.1%	3,384 4.3%	3,235 0.5%	3,032 3.7%
2009	2,987 0.7%	3,002 -0.1%	3,058 -2.0%	3,024 -7.3%	3,048 -8.2%	3,082 -12.2%	3,048 -12.5%	3,025 -11.2%	3,121 -10.6%	3,027 -10.5%	2,949 -8.8%	

New Castle County, DE - Single-Family - Inventory Accumulation

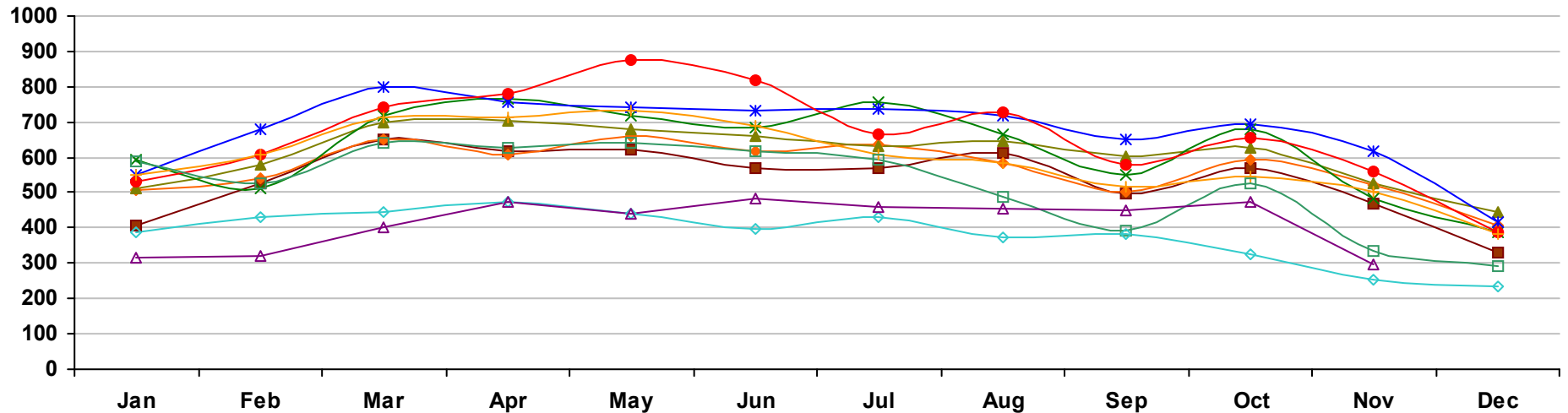


	Jan	Feb	Mar	Apr	May	Jun	Jul	Aug	Sep	Oct	Nov	Dec
■ 2000	3.1	3.0	3.1	3.1	3.0	3.2	3.3	3.2	3.3	3.2	3.0	2.8
◆ 2001	2.8 -9.7%	2.7 -10.0%	2.6 -16.1%	2.8 -9.7%	2.9 -3.3%	3.0 -6.3%	3.0 -9.1%	3.1 -3.1%	3.1 -6.1%	3.1 -3.1%	3.0 0.0%	2.8 0.0%
▲ 2002	2.7 -3.6%	2.7 0.0%	2.5 -3.8%	2.6 -7.1%	2.6 -10.3%	2.6 -13.3%	2.6 -13.3%	2.5 -19.4%	2.6 -16.1%	2.6 -16.1%	2.5 -16.7%	2.4 -14.3%
✕ 2003	2.3 -14.8%	2.2 -18.5%	2.3 -8.0%	2.2 -15.4%	2.4 -7.7%	2.4 -7.7%	2.4 -7.7%	2.3 -8.0%	2.5 -3.8%	2.4 -7.7%	2.3 -8.0%	2.1 -12.5%
✱ 2004	2.0 -13.0%	2.0 -9.1%	1.9 -17.4%	2.0 -9.1%	2.0 -16.7%	2.2 -8.3%	2.3 -4.2%	2.3 0.0%	2.4 -4.0%	2.3 -4.2%	2.2 -4.3%	2.1 0.0%
● 2005	2.0 0.0%	2.0 0.0%	1.9 0.0%	2.1 5.0%	2.1 5.0%	2.0 -9.1%	2.1 -8.7%	2.2 -4.3%	2.6 8.3%	2.8 21.7%	2.8 27.3%	2.6 23.8%
+ 2006	2.7 35.0%	2.7 35.0%	2.8 47.4%	3.0 42.9%	3.2 52.4%	3.4 70.0%	3.5 66.7%	3.9 77.3%	4.3 65.4%	4.4 57.1%	4.3 53.6%	4.0 53.8%
□ 2007	4.0 48.1%	4.0 48.1%	4.2 50.0%	4.6 53.3%	4.9 53.1%	5.2 52.9%	5.4 54.3%	5.6 43.6%	5.9 37.2%	5.9 34.1%	5.9 37.2%	5.5 37.5%
◇ 2008	5.7 42.5%	5.9 47.5%	6.3 50.0%	6.8 47.8%	7.1 44.9%	7.8 50.0%	8.0 48.1%	8.2 46.4%	8.5 44.1%	8.4 42.4%	8.4 42.4%	8.0 45.5%
△ 2009	8.0 40.4%	8.2 39.0%	8.5 34.9%	8.6 26.5%	8.7 22.5%	8.8 12.8%	8.6 7.5%	8.5 3.7%	8.6 1.2%	8.3 -1.2%	7.8 -7.1%	

Market History Report © Copyright 2009 TREND. Compiled on 12/10/2009. Information deemed reliable, but not guaranteed. Contact TREND for reprint permission.

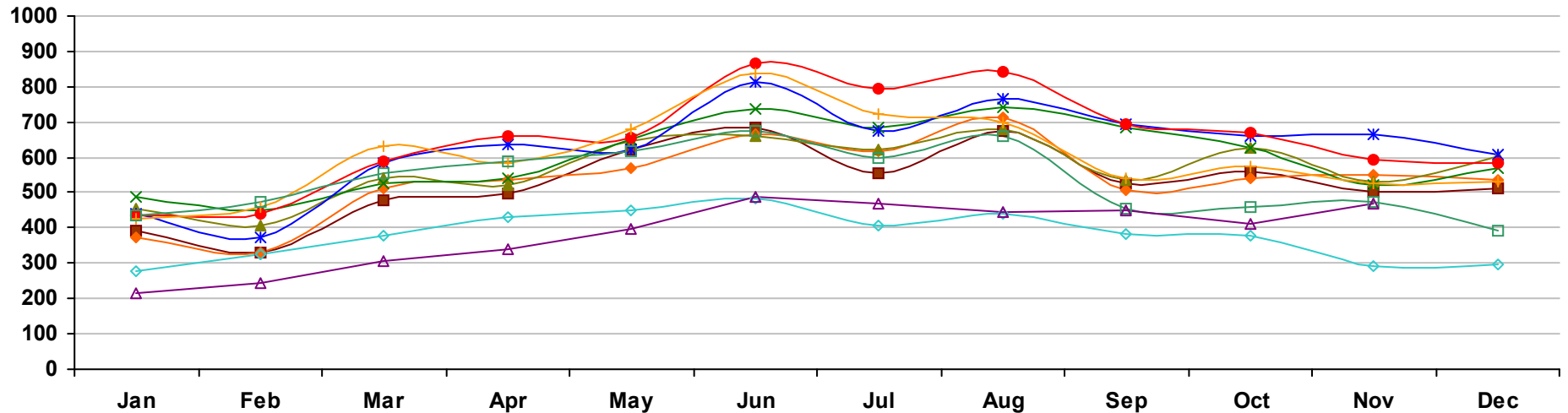
TREND • 660 American Avenue, Suite 203 • King of Prussia, PA 19406 • 1-877-330-9900 • www.trendmls.com

New Castle County, DE - Single-Family - Pending Units



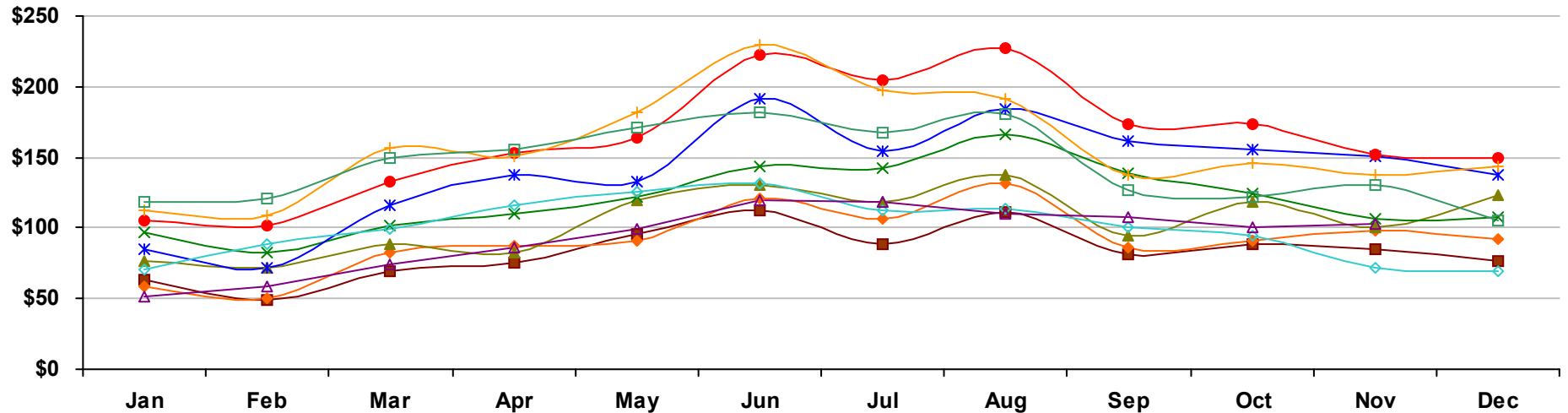
	Jan	Feb	Mar	Apr	May	Jun	Jul	Aug	Sep	Oct	Nov	Dec
2000	408	524	652	618	624	570	571	612	496	568	467	331
2001	505 23.8%	541 3.2%	651 -0.2%	606 -1.9%	660 5.8%	618 8.4%	635 11.2%	585 -4.4%	501 1.0%	595 4.8%	520 11.3%	408 23.3%
2002	513 1.6%	579 7.0%	699 7.4%	704 16.2%	680 3.0%	661 7.0%	632 -0.5%	644 10.1%	605 20.8%	628 5.5%	527 1.3%	443 8.6%
2003	593 15.6%	513 -11.4%	718 2.7%	767 8.9%	720 5.9%	686 3.8%	757 19.8%	666 3.4%	548 -9.4%	681 8.4%	484 -8.2%	389 -12.2%
2004	549 -7.4%	679 32.4%	801 11.6%	758 -1.2%	743 3.2%	731 6.6%	738 -2.5%	717 7.7%	649 18.4%	692 1.6%	615 27.1%	417 7.2%
2005	532 -3.1%	609 -10.3%	741 -7.5%	782 3.2%	875 17.8%	819 12.0%	663 -10.2%	727 1.4%	581 -10.5%	654 -5.5%	561 -8.8%	386 -7.4%
2006	548 3.0%	608 -0.2%	711 -4.0%	715 -8.6%	733 -16.2%	689 -15.9%	606 -8.6%	584 -19.7%	519 -10.7%	546 -16.5%	503 -10.3%	381 -1.3%
2007	589 7.5%	528 -13.2%	641 -9.8%	627 -12.3%	639 -12.8%	615 -10.7%	594 -2.0%	490 -16.1%	392 -24.5%	526 -3.7%	333 -33.8%	291 -23.6%
2008	389 -34.0%	430 -18.6%	445 -30.6%	472 -24.7%	442 -30.8%	399 -35.1%	429 -27.8%	371 -24.3%	382 -2.6%	325 -38.2%	253 -24.0%	235 -19.2%
2009	316 -18.8%	322 -25.1%	402 -9.7%	472 0.0%	440 -0.5%	481 20.6%	460 7.2%	454 22.4%	449 17.5%	474 45.8%	297 17.4%	

New Castle County, DE - Single-Family - Settled Units



	Jan	Feb	Mar	Apr	May	Jun	Jul	Aug	Sep	Oct	Nov	Dec
2000	394	329	479	496	624	683	554	673	524	558	503	511
2001	374	329	511	538	570	666	616	713	506	542	549	537
	-5.1%	0.0%	6.7%	8.5%	-8.7%	-2.5%	11.2%	5.9%	-3.4%	-2.9%	9.1%	5.1%
2002	454	408	540	521	646	661	620	678	538	626	531	601
	21.4%	24.0%	5.7%	-3.2%	13.3%	-0.8%	0.6%	-4.9%	6.3%	15.5%	-3.3%	11.9%
2003	490	450	526	542	652	736	685	741	686	627	523	569
	7.9%	10.3%	-2.6%	4.0%	0.9%	11.3%	10.5%	9.3%	27.5%	0.2%	-1.5%	-5.3%
2004	440	375	584	637	623	812	674	767	696	659	667	610
	-10.2%	-16.7%	11.0%	17.5%	-4.4%	10.3%	-1.6%	3.5%	1.5%	5.1%	27.5%	7.2%
2005	436	439	590	661	655	865	793	844	692	669	592	583
	-0.9%	17.1%	1.0%	3.8%	5.1%	6.5%	17.7%	10.0%	-0.6%	1.5%	-11.2%	-4.4%
2006	425	458	633	584	679	839	722	698	540	576	527	532
	-2.5%	4.3%	7.3%	-11.6%	3.7%	-3.0%	-9.0%	-17.3%	-22.0%	-13.9%	-11.0%	-8.7%
2007	435	474	555	587	617	674	599	661	454	458	476	391
	2.4%	3.5%	-12.3%	0.5%	-9.1%	-19.7%	-17.0%	-5.3%	-15.9%	-20.5%	-9.7%	-26.5%
2008	279	325	378	431	449	482	409	438	381	380	294	298
	-35.9%	-31.4%	-31.9%	-26.6%	-27.2%	-28.5%	-31.7%	-33.7%	-16.1%	-17.0%	-38.2%	-23.8%
2009	216	245	308	342	396	490	469	446	448	413	467	
	-22.6%	-24.6%	-18.5%	-20.6%	-11.8%	1.7%	14.7%	1.8%	17.6%	8.7%	58.8%	

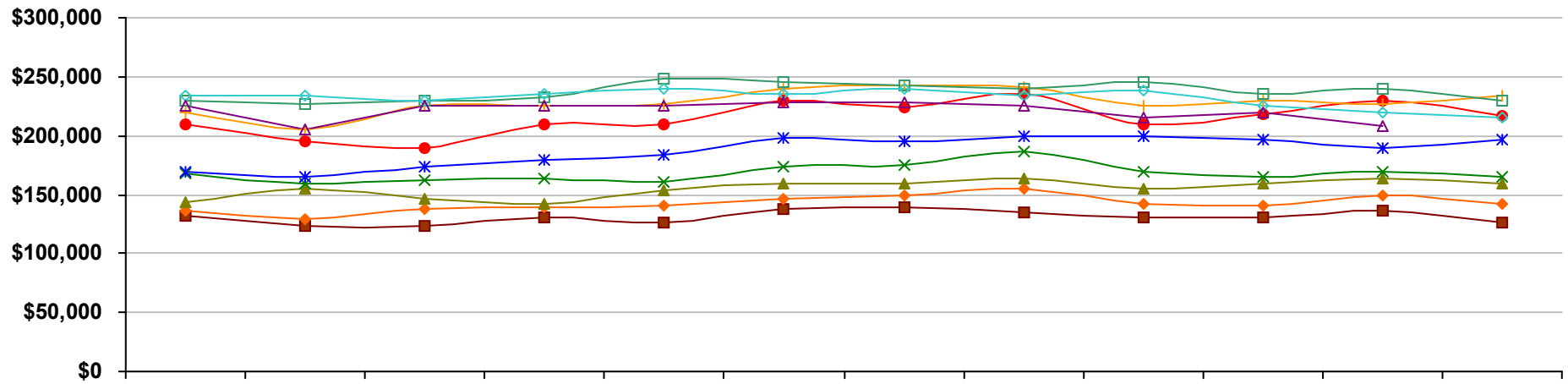
New Castle County, DE - Single-Family - Total Settled Volume



	Jan	Feb	Mar	Apr	May	Jun	Jul	Aug	Sep	Oct	Nov	Dec
2000	\$63	\$49	\$69	\$75	\$96	\$113	\$88	\$111	\$81	\$89	\$85	\$77
2001	\$59 -6.3%	\$50 2.6%	\$82 17.5%	\$87 15.8%	\$91 -5.9%	\$121 7.1%	\$106 20.0%	\$132 18.7%	\$86 6.9%	\$91 2.0%	\$98 15.1%	\$92 19.1%
2002	\$77 29.5%	\$72 44.6%	\$89 8.4%	\$83 -4.3%	\$120 32.1%	\$130 7.2%	\$119 12.2%	\$138 4.4%	\$95 10.7%	\$118 30.7%	\$101 2.7%	\$123 33.8%
2003	\$97 26.7%	\$83 14.0%	\$102 14.7%	\$110 31.8%	\$122 2.2%	\$144 11.5%	\$142 19.2%	\$166 20.2%	\$139 46.2%	\$124 4.3%	\$107 6.3%	\$108 -12.6%
2004	\$85 -12.4%	\$72 -12.3%	\$116 13.7%	\$138 25.4%	\$133 8.9%	\$191 32.2%	\$154 8.5%	\$184 11.0%	\$161 15.7%	\$156 26.1%	\$151 40.6%	\$138 28.3%
2005	\$105 23.5%	\$102 41.2%	\$133 14.9%	\$153 11.2%	\$164 23.2%	\$222 16.0%	\$205 33.3%	\$227 23.3%	\$174 7.6%	\$174 11.7%	\$152 0.8%	\$149 8.1%
2006	\$112 6.9%	\$109 6.6%	\$157 18.0%	\$151 -1.1%	\$182 11.0%	\$230 4.0%	\$197 -3.9%	\$191 -15.7%	\$138 -20.7%	\$146 -16.3%	\$137 -10.0%	\$143 -4.4%
2007	\$119 5.8%	\$121 11.4%	\$149 -4.7%	\$155 2.7%	\$171 -6.3%	\$182 -21.1%	\$168 -14.9%	\$181 -5.5%	\$127 -7.6%	\$122 -16.1%	\$130 -5.0%	\$105 -26.7%
2008	\$70 -40.8%	\$88 -27.8%	\$99 -33.7%	\$116 -25.5%	\$126 -26.3%	\$131 -28.1%	\$113 -32.6%	\$114 -36.8%	\$100 -21.3%	\$94 -23.4%	\$72 -44.2%	\$69 -34.5%
2009	\$51 -27.1%	\$59 -32.7%	\$74 -25.5%	\$86 -25.3%	\$99 -21.4%	\$120 -8.3%	\$118 4.7%	\$110 -3.4%	\$108 8.3%	\$100 7.3%	\$103 41.8%	

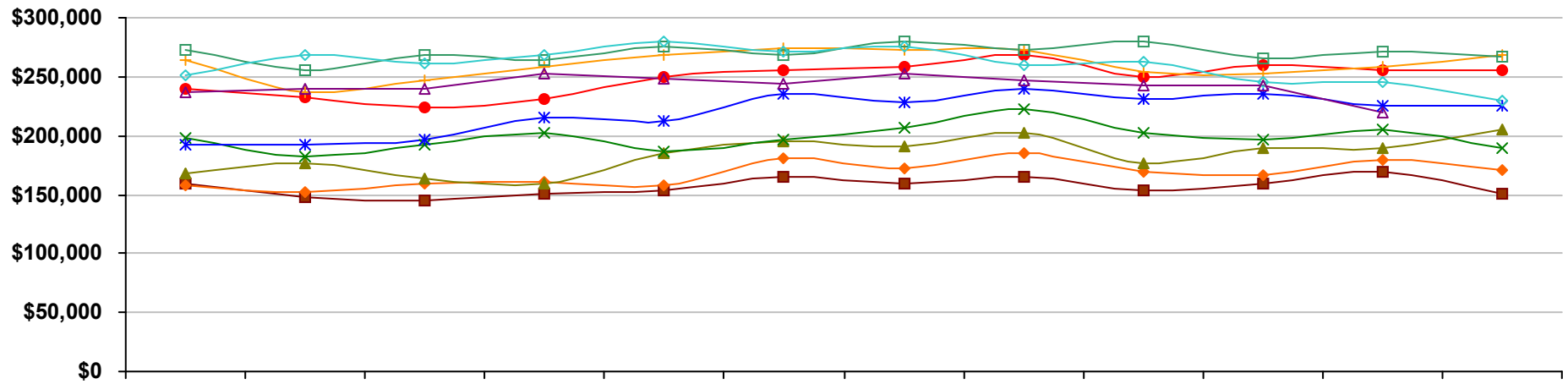
Values on this report are displayed in Millions

New Castle County, DE - Single-Family - Median Settled Price



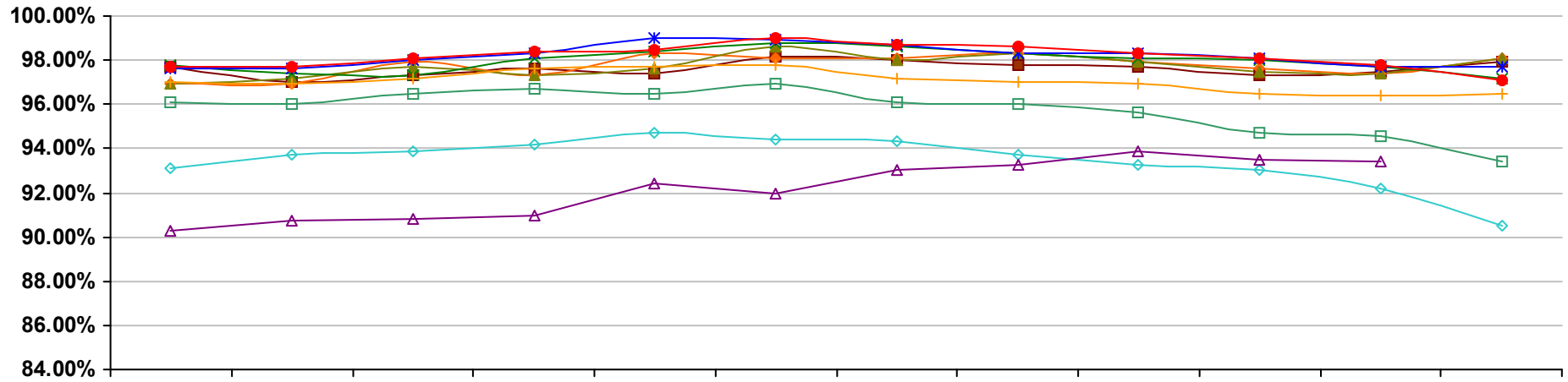
	Jan	Feb	Mar	Apr	May	Jun	Jul	Aug	Sep	Oct	Nov	Dec
2000	\$132,000	\$123,000	\$123,000	\$130,000	\$127,000	\$138,000	\$139,000	\$135,000	\$131,000	\$131,000	\$137,000	\$126,000
2001	\$137,000 3.8%	\$129,000 4.9%	\$138,000 12.2%	\$139,000 6.9%	\$141,000 11.0%	\$147,000 6.5%	\$150,000 7.9%	\$155,000 14.8%	\$142,000 8.4%	\$140,000 6.9%	\$150,000 9.5%	\$142,000 12.7%
2002	\$143,000 4.4%	\$155,000 20.2%	\$147,000 6.5%	\$142,000 2.2%	\$154,000 9.2%	\$160,000 8.8%	\$159,000 6.0%	\$164,000 5.8%	\$155,000 9.2%	\$159,000 13.6%	\$164,000 9.3%	\$160,000 12.7%
2003	\$168,000 17.5%	\$159,000 2.6%	\$162,000 10.2%	\$163,000 14.8%	\$161,000 4.5%	\$174,000 8.8%	\$175,000 10.1%	\$186,000 13.4%	\$170,000 9.7%	\$165,000 3.8%	\$170,000 3.7%	\$165,000 3.1%
2004	\$170,000 1.2%	\$165,000 3.8%	\$174,000 7.4%	\$179,000 9.8%	\$184,000 14.3%	\$198,000 13.8%	\$195,000 11.4%	\$200,000 7.5%	\$199,000 17.1%	\$196,000 18.8%	\$189,000 11.2%	\$197,000 19.4%
2005	\$209,000 22.9%	\$195,000 18.2%	\$189,000 8.6%	\$210,000 17.3%	\$210,000 14.1%	\$229,000 15.7%	\$224,000 14.9%	\$235,000 17.5%	\$209,000 5.0%	\$218,000 11.2%	\$229,000 21.2%	\$217,000 10.2%
2006	\$219,000 4.8%	\$205,000 5.1%	\$225,000 19.0%	\$225,000 7.1%	\$227,000 8.1%	\$240,000 4.8%	\$242,000 8.0%	\$241,000 2.6%	\$225,000 7.7%	\$230,000 5.5%	\$227,000 -0.9%	\$234,000 7.8%
2007	\$230,000 5.0%	\$227,000 10.7%	\$229,000 1.8%	\$232,000 3.1%	\$249,000 9.7%	\$245,000 2.1%	\$243,000 0.4%	\$240,000 -0.4%	\$245,000 8.9%	\$235,000 2.2%	\$240,000 5.7%	\$229,000 -2.1%
2008	\$234,000 1.7%	\$234,000 3.1%	\$230,000 0.4%	\$235,000 1.3%	\$240,000 -3.6%	\$236,000 -3.7%	\$240,000 -1.2%	\$234,000 -2.5%	\$238,000 -2.9%	\$226,000 -3.8%	\$220,000 -8.3%	\$215,000 -6.1%
2009	\$225,000 -3.8%	\$205,000 -12.4%	\$225,000 -2.2%	\$225,000 -4.3%	\$225,000 -6.2%	\$228,000 -3.4%	\$228,000 -5.0%	\$225,000 -3.8%	\$215,000 -9.7%	\$220,000 -2.7%	\$208,000 -5.5%	

New Castle County, DE - Single-Family - Average Settled Price



	Jan	Feb	Mar	Apr	May	Jun	Jul	Aug	Sep	Oct	Nov	Dec
■ 2000	\$160,000	\$148,000	\$145,000	\$151,000	\$154,000	\$165,000	\$159,000	\$165,000	\$153,000	\$159,000	\$169,000	\$151,000
◆ 2001	\$158,000 -1.2%	\$152,000 2.7%	\$159,000 9.7%	\$161,000 6.6%	\$158,000 2.6%	\$181,000 9.7%	\$172,000 8.2%	\$185,000 12.1%	\$170,000 11.1%	\$167,000 5.0%	\$179,000 5.9%	\$171,000 13.2%
▲ 2002	\$168,000 6.3%	\$177,000 16.4%	\$163,000 2.5%	\$159,000 -1.2%	\$185,000 17.1%	\$195,000 7.7%	\$191,000 11.0%	\$203,000 9.7%	\$177,000 4.1%	\$189,000 13.2%	\$189,000 5.6%	\$205,000 19.9%
✕ 2003	\$198,000 17.9%	\$183,000 3.4%	\$193,000 18.4%	\$202,000 27.0%	\$187,000 1.1%	\$196,000 0.5%	\$207,000 8.4%	\$223,000 9.9%	\$203,000 14.7%	\$197,000 4.2%	\$205,000 8.5%	\$189,000 -7.8%
✱ 2004	\$193,000 -2.5%	\$193,000 5.5%	\$197,000 2.1%	\$215,000 6.4%	\$213,000 13.9%	\$235,000 19.9%	\$228,000 10.1%	\$239,000 7.2%	\$231,000 13.8%	\$236,000 19.8%	\$226,000 10.2%	\$226,000 19.6%
● 2005	\$240,000 24.4%	\$232,000 20.2%	\$224,000 13.7%	\$231,000 7.4%	\$250,000 17.4%	\$256,000 8.9%	\$258,000 13.2%	\$268,000 12.1%	\$250,000 8.2%	\$260,000 10.2%	\$256,000 13.3%	\$256,000 13.3%
⊕ 2006	\$264,000 10.0%	\$237,000 2.2%	\$247,000 10.3%	\$258,000 11.7%	\$268,000 7.2%	\$274,000 7.0%	\$273,000 5.8%	\$273,000 1.9%	\$254,000 1.6%	\$252,000 -3.1%	\$259,000 1.2%	\$268,000 4.7%
◻ 2007	\$273,000 3.4%	\$256,000 8.0%	\$268,000 8.5%	\$264,000 2.3%	\$276,000 3.0%	\$269,000 -1.8%	\$280,000 2.6%	\$273,000 0.0%	\$280,000 10.2%	\$266,000 5.6%	\$272,000 5.0%	\$267,000 -0.4%
◇ 2008	\$251,000 -8.1%	\$269,000 5.1%	\$261,000 -2.6%	\$268,000 1.5%	\$280,000 1.4%	\$271,000 0.7%	\$276,000 -1.4%	\$260,000 -4.8%	\$262,000 -6.4%	\$246,000 -7.5%	\$246,000 -9.6%	\$230,000 -13.9%
△ 2009	\$237,000 -5.6%	\$240,000 -10.8%	\$239,000 -8.4%	\$252,000 -6.0%	\$249,000 -11.1%	\$244,000 -10.0%	\$252,000 -8.7%	\$247,000 -5.0%	\$242,000 -7.6%	\$243,000 -1.2%	\$220,000 -10.6%	

New Castle County, DE - Single-Family - Average Settled Price/Original Price



	Jan	Feb	Mar	Apr	May	Jun	Jul	Aug	Sep	Oct	Nov	Dec
2000	97.7%	97.0%	97.3%	97.6%	97.4%	98.2%	98.0%	97.8%	97.7%	97.3%	97.5%	97.9%
2001	96.9%	96.9%	97.9%	97.3%	98.3%	98.1%	98.1%	98.3%	97.9%	97.6%	97.4%	98.1%
	-0.9%	-0.1%	0.6%	-0.3%	1.0%	-0.1%	0.1%	0.4%	0.2%	0.2%	-0.1%	0.3%
2002	96.9%	97.2%	97.7%	97.3%	97.6%	98.6%	98.0%	98.3%	97.9%	97.5%	97.4%	98.1%
	0.0%	0.3%	-0.3%	-0.1%	-0.8%	0.5%	-0.2%	0.0%	0.0%	-0.1%	0.0%	0.0%
2003	97.8%	97.4%	97.3%	98.1%	98.4%	98.8%	98.6%	98.3%	98.1%	98.0%	97.7%	97.2%
	0.9%	0.1%	-0.4%	0.8%	0.9%	0.2%	0.7%	0.1%	0.2%	0.6%	0.2%	-0.9%
2004	97.6%	97.6%	98.0%	98.3%	99.0%	98.9%	98.7%	98.3%	98.3%	98.1%	97.7%	97.7%
	-0.2%	0.2%	0.6%	0.2%	0.5%	0.1%	0.1%	0.0%	0.1%	0.1%	0.1%	0.5%
2005	97.7%	97.7%	98.1%	98.4%	98.5%	99.0%	98.7%	98.6%	98.3%	98.1%	97.8%	97.1%
	0.1%	0.1%	0.2%	0.1%	-0.5%	0.1%	0.0%	0.3%	0.0%	0.0%	0.1%	-0.6%
2006	97.0%	96.9%	97.2%	97.6%	97.7%	97.8%	97.2%	97.0%	96.9%	96.5%	96.4%	96.5%
	-0.8%	-0.8%	-1.0%	-0.7%	-0.8%	-1.2%	-1.5%	-1.6%	-1.4%	-1.6%	-1.4%	-0.6%
2007	96.1%	96.0%	96.5%	96.7%	96.5%	96.9%	96.1%	96.0%	95.6%	94.7%	94.6%	93.4%
	-0.9%	-0.9%	-0.7%	-0.9%	-1.2%	-0.9%	-1.1%	-1.1%	-1.4%	-1.9%	-1.9%	-3.2%
2008	93.1%	93.7%	93.9%	94.2%	94.7%	94.4%	94.3%	93.7%	93.3%	93.0%	92.2%	90.5%
	-3.1%	-2.4%	-2.7%	-2.6%	-1.8%	-2.6%	-1.9%	-2.4%	-2.4%	-1.8%	-2.6%	-3.1%
2009	90.3%	90.7%	90.8%	91.0%	92.4%	92.0%	93.0%	93.3%	93.9%	93.5%	93.4%	
	-3.0%	-3.2%	-3.3%	-3.5%	-2.5%	-2.5%	-1.3%	-0.5%	0.7%	0.5%	1.4%	